

1x2 /2x2 Large Fiber Core 400µm Coupler/Splitter



DATASHEET

[Return to the Webpage](#)



The FC Series fiber optic coupler is based on fused biconical taper technology and compact packaging structure. It features good uniformity, low excess loss and very low polarization sensitivity. The device is ideal for splitting or combining light with exceptional performance over a wide wavelength range.

Couplers are highly efficient in splitting light with little loss, about 0.2dB per joint, but incur significant losses when combining lights; for example, a 50/50 coupler produces a 50% loss to each beam when combined. For beam-combining applications, search Combiner.

Features

- Wavelength Independent
- Low Insertion Loss
- Low PDL
- Highly Stable & Reliable
- Ultra Low Cost

Applications

- Sensor
- Lasers
- Medical

Specifications

Parameter	Min	Typical	Max	Unit
Splitting Ratio	5/95 to 50/50			
Core Size	400			µm
Central Wavelength	450/550/650/850/1310			nm
Bandwidth	± 20			nm
Excess Loss ^[1]		Premium	Grade A	
		0.37	0.45	dB
Insertion Loss ^[1]	50/50	3.6/3.8	3.8/3.8	dB
	40/60	4.6/2.6	5.0/3.0	dB
	30/70	5.9/1.9	6.3/2.3	dB
	20/80	7.8/1.2	8.3/1.7	dB
	10/90	11.2/0.7	12.0/1.2	dB
	5/95	15.0/0.5	16.0/0.8	dB
Uniformity ^[1]		1	1.2	dB
Optical Power Handling		8		W
Operating Temperature	-40		85	°C
Storage Temperature	-50		85	°C
Package	900µm loose tube: (ø)3.9x(L)70			

Notes:

[1]. * The value is also related to the multimode filling ratio. This vale is for CPR =14

Note: The specifications provided are for general applications with a cost-effective approach. If you need to narrow or expand the tolerance, coverage, limit, or qualifications, please [\[click this link\]](#):

Legal notices: All product information is believed to be accurate and is subject to change without notice. Information contained herein shall legally bind Agiltron only if it is specifically incorporated into the terms and conditions of a sales agreement. Some specific combinations of options may not be available. The user assumes all risks and liability whatsoever in connection with the use of a product or its application.

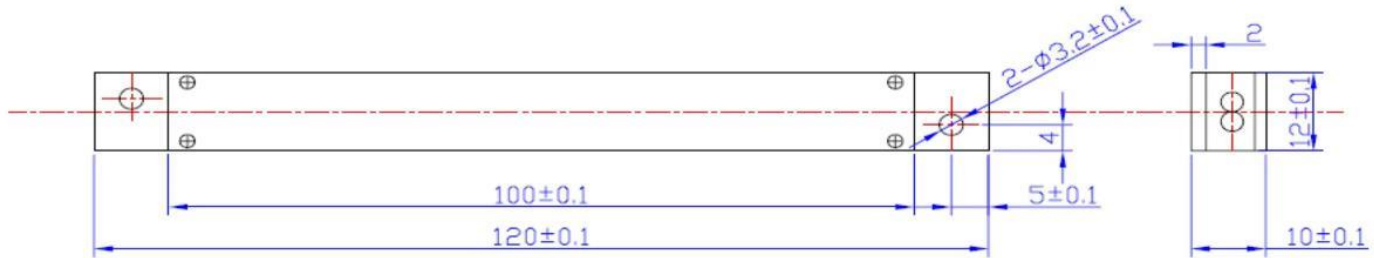
Rev 10/14/24

1x2 /2x2 Large Fiber Core 400µm Coupler/Splitter



DATASHEET

Mechanical Dimensions (mm)



*Product dimensions may change without notice. This is sometimes required for non-standard specifications.

Ordering Information

Prefix	Port	Wavelength	Grade	Package	Splitting Ratio	Fiber Type	Fiber Cover	Fiber Length	Connector
FCLC-	1x2 = 1 2x2 = 2	1310nm = 7 850nm = 8 650nm = 6 550nm = 5 450nm = 4 Special = 0	P Grade = P A Grade = A	70(L) = 2 Special = 0	50/50 = 1 05/95 = 3 10/90 = 4 20/80 = 5 30/70 = 6 40/60 = 7 Special = 0	NA0.22 = 4	900µm tube = 2 Special = 0	0.5m = 1 0.75m = 2 1.0m = 3 Special = 0	None = 1 FC/PC = 2 FC/APC = 3 ST = 8 LC/UPC = U Special = 0

Application Notes

Fiber Core Alignment

Note that the minimum attenuation for these devices depends on excellent core-to-core alignment when the connectors are mated. This is crucial for shorter wavelengths with smaller fiber core diameters that can increase the loss of many decibels above the specification if they are not perfectly aligned. Different vendors' connectors may not mate well with each other, especially for angled APC.

Fiber Cleanliness

Fibers with smaller core diameters (<5 µm) must be kept extremely clean, contamination at fiber-fiber interfaces, combined with the high optical power density, can lead to significant optical damage. This type of damage usually requires re-polishing or replacement of the connector.

Maximum Optical Input Power

Due to their small fiber core diameters for short wavelength and high photon energies, the damage thresholds for device is substantially reduced than the common 1550nm fiber. To avoid damage to the exposed fiber end faces and internal components, the optical input power should never exceed 20 mW for wavelengths shorter 650nm. We produce a special version to increase the how handling by expanding the core side at the fiber ends.